



ZEBRA-TECH LTD

www.zebra-tech.co.nz



The Hydro-Wiper

The Hydro-Wiper is an innovative mechanical wiper system designed to be easily fitted to optical turbidity sensors

Reduce costly field site visits

The gentle brushing action of the Hydro-Wiper keeps the optical window of the turbidity sensor clean of deposits and bio-fouling without costly site visits for manual cleaning.

Maintain data quality throughout long deployments

Using the Hydro-Wiper maintains quality turbidity data that would otherwise deteriorate during long deployments or in harsh conditions.

Rugged and reliable

The field proven design and on-board intelligence ensures the Hydro-Wiper operates reliably and consistently.

Simple installation and operation

The Hydro-Wiper is fully self-contained making it easy to install, even into existing setups.

Choice

The Hydro-Wiper is available in 3 models for 3 commonly available turbidity sensors.

Hydro-Wiper model:	Turbidity sensor:
Hydro-Wiper A	Seapoint turbidity sensor
Hydro-Wiper B	D&A OBS 3
Hydro-Wiper C	D&A OBS 3 +



Hydro-Wiper A

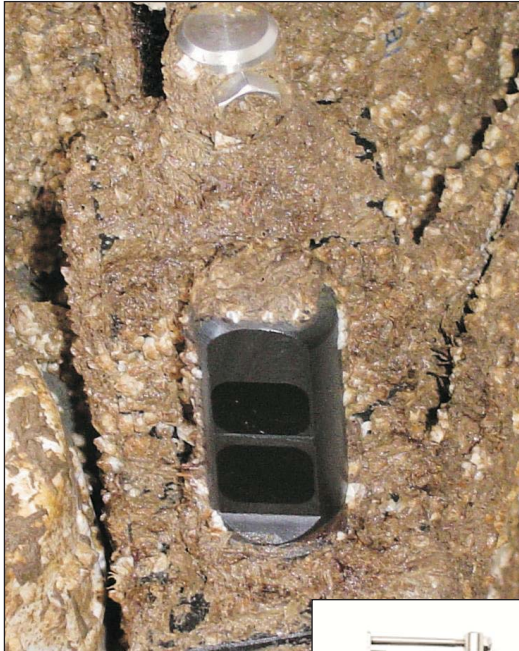


Hydro-Wiper B



Hydro-Wiper C

Instrumentation for environmental monitoring and research



Hydro-Wiper protecting a Seapoint Turbidity Sensor from heavy biofouling



The Hydro-Wiper

Features:

- Highly effective in both marine and fresh water
- Simple to attach
- Embedded microprocessor for intelligent operation control
- High precision on-board clock for accurate wipe interval timing
- Fully self contained; no system integration required
- Rugged design for dependable reliability
- Field proven brush technology
- Simple wipe interval adjustment
- Very long deployment endurance
- Drive shaft slip mechanism prevents gearbox damage
- 30m operating depth as standard

Options:

- Extended depth rating of 100m
- Impulse wet pluggable connectors on the wiper and/or battery housing
- Additional cable between the wiper and battery housing
- Trigger input for external control of the wiper
- Custom configurations available; please contact Zebra-Tech to discuss your requirements

Specifications:

- **Wipe interval:** 1, 2, 3, 4, 5, 6, 7, 8, 12 or 24 hours
- **Wipe interval timer accuracy:** +/- 1 minute per year (0 - 40° C)
- **Power supply:** 6 x AA Alkaline batteries
- **Deployment endurance:** More than 4 months with a 2 hour wipe interval
- **Construction:** Stainless steel, acetal
- **Depth rating:** 30m
- **Cable:** EPDM jacketed cable between the wiper and battery housing (1 meter standard length).
- **Cable entry:** Strain relieved cable glands with 'O' ring sealed back-insert.

Contact:

Zebra-Tech Ltd

Tel: International 0064 3 5471590

Fax: International 0064 3 5471598

Email: sales@zebra-tech.co.nz

Web: www.zebra-tech.co.nz

Designed and manufactured in New Zealand



ZEBRA-TECH LTD

www.zebra-tech.co.nz



Instrumentation for environmental monitoring and research